



# STRATEGIC PLAN 2018 - 2021



COLLEGE OF  
LICENSED PRACTICAL NURSES  
OF ALBERTA

## OUR MANDATE

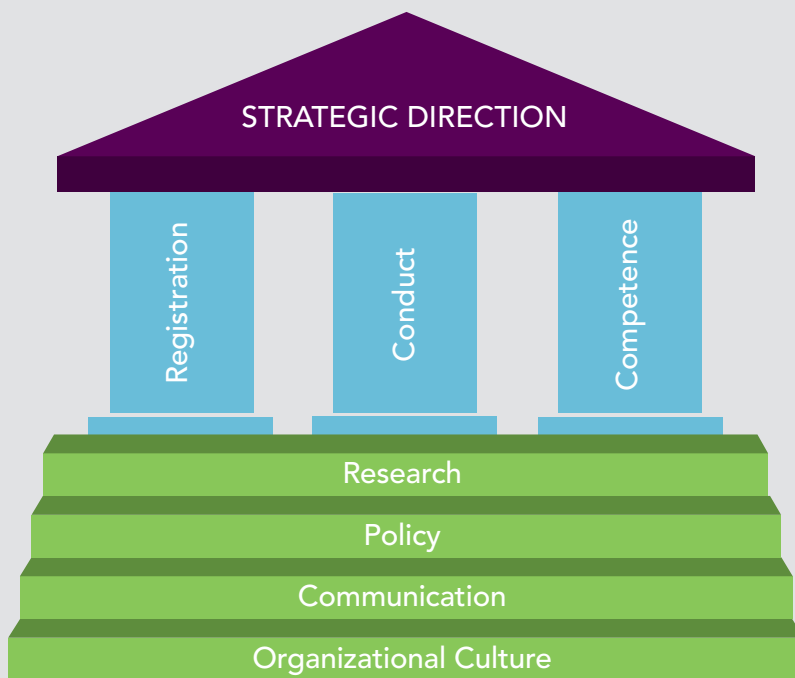
To regulate and lead the profession in a manner that protects and serves the public through excellence in Practical Nursing.

## OUR VISION

Influencing a quality, person-centred system through regulatory excellence.

## OUR MISSION

Licensed Practical Nurses (LPNs) are progressive nursing professionals who provide safe, competent and ethical person-centred care in collaboration with clients, families and other providers.



The College of Licensed Practical Nurses of Alberta (CLPNA) is the professional regulatory body for Licensed Practical Nurses. The CLPNA is responsible to govern the profession in a manner that protects and serves the public interest.

## Strategic Direction

As a progressive regulatory body, the CLPNA actively pursues principles of regulatory excellence. The CLPNA regulatory processes are strengthened with the use of best evidence, consistently ensuring procedural fairness and transparency, while remaining efficient and cost effective.

The CLPNA will continue building partnerships and coalitions that anticipate and are responsive to the health needs of society. The CLPNA provides a strong foundation for Licensed Practical Nurses to provide safe, competent and ethical person-centred care, so every experience with a Licensed Practical Nurse positively impacts the personal health journey of Albertans.

# Three-Year Business Plan (2018-2021)

The CLPNA achieves the strategic direction through the core regulatory functions of registration, conduct, and competence. These core functions are supported by a foundation of research, policy, communications, and an organizational culture committed to continuous improvement.

## ■ Core Function 1: Registration

**Commits to excellence in registration standards.**

- 1.1 Ensure registration processes uphold procedural fairness, transparency, and consistency.
- 1.2 Develop guidelines to enhance decision making.
- 1.3 Incorporate technology to advance registration processes.

## ■ Core Function 2: Conduct

**Enforce standards of professional practice.**

- 2.1 Facilitate LPN understanding of legislation, regulation, professional standards, and ethics.
- 2.2 Enhance tools and resources to support LPN practice.
- 2.3 Ensure complaints processes uphold procedural fairness, transparency, and consistency.

## ■ Core Function 3: Competence

**Establish and uphold standards to support competence.**

- 3.1 Prepare LPNs to meet the changing needs of the health system.
- 3.2 Facilitate LPN access to resources that support continuing competence.
- 3.3 Explore and implement processes to evaluate competence.



## Supporting Function 1: Research

- Lead and collaborate on research to support regulatory excellence and the creation of knowledge on LPN practice.

## Supporting Function 2: Policy

- Create evidence informed policy to support regulatory processes.

## Supporting Function 3: Communication

- Facilitate responsive and relevant communication with the public, LPNs, and stakeholders.

## Supporting Function 4: Organizational Culture

- Create a productive environment built on trust, respect, safety, collaboration and a commitment to continuous improvement and fiscal responsibility.

Every experience with a Licensed Practical Nurse positively impacts the personal health journey of Albertans.



COLLEGE OF  
**LICENSED PRACTICAL NURSES**  
OF ALBERTA

St. Albert Trail Place  
13163 -146 Street  
Edmonton, AB T5L 4S8

Phone 780.484.8886  
Toll Free 1.800.661.5877  
Fax 780.484.9069

[www.clpna.com](http://www.clpna.com)